

Tonnage Comparisons for April - 2016-17 compared to the same periods in 2012-13 to 2015-16

Material & Source	Tonnage Comparisons					Weight Variance	Percentage Change
	April - 2012-13	2013-14	2014-15	2015-16	2016-17		
1 Glass	15,131	14,909	14,986	15,138	15,184	46	0.30%
2 Paper	15,452	13,785	12,561	12,563	11,416	-1,147	-9.13%
3 Cardboard	11,931	12,851	13,962	15,055	15,286	231	1.53%
4 Mixed Paper and Cardboard	1,962	1,446	984	288	200	-88	-30.56%
5 Cans	2,496	2,417	2,119	2,162	2,117	-45	-2.08%
6 Plastics	3,034	3,086	3,054	3,070	3,448	378	12.31%
7 Clothes and Shoes	1,658	1,756	1,670	1,922	1,894	-28	-1.46%
8 Car Batteries	111	122	173	160	159	-1	-0.62%
9 Mineral Oil	38	32	42	64	36	-28	-43.75%
10 Cooking Oil	10	11	12	14	9	-5	-35.71%
11 Other Packaging (Cartons)	43	39	32	28	23	-5	-17.86%
12 Aluminium Foil	24	21	6	1	0	-1	-100.00%
13 Non Packaging Scrap Metal	4,654	5,386	4,538	5,163	5,241	78	1.51%
14 Books	2	1	3	2	1	-1	-50.00%
15 Furniture	383	371	280	262	272	10	3.82%
16 Non-Packaging Glass	208	245	316	103	0	-103	-100.00%
17 Wood	2,268	3,011	5,758	6,148	6,143	-5	-0.08%
18 Fridges and Freezers	718	770	837	886	983	97	10.95%
19 Other Electrical Goods	3,077	2,853	3,305	3,554	3,404	-150	-4.22%
20 Bric-a-brac (Reuse)	334	345	526	529	433	-96	-18.15%
21 Paint	0	0	0	0	47	47	100.00%
22 Garden Waste	39,384	39,277	43,975	42,912	44,174	1,262	2.94%
23 Wood to Compost	2,013	1,251	0	0	0	0	0.00%
24 Food Waste	16,657	15,908	15,643	17,913	18,456	543	3.03%
25 Street Sweepings	0	3,084	7,524	8,117	7,670	-447	-5.51%
26 Household Reused, Recycled & Composted	121,586	122,977	132,307	136,055	136,596	541	0.40%
27 Non-Household Reused, Recycled & Composted	755	1,379	1,406	1,664	986	-679	-40.79%
28 Total Reused, Recycled & Composted	122,341	124,356	133,713	137,720	137,582	-138	-0.10%
29 Residual to Landfill (Collected)	102,312	102,164	100,414	99,742	101,870	2,128	2.13%
30 Residual to Landfill (RC & CRS)	13,752	14,542	15,853	16,772	16,031	-741	-4.42%
31 Asbestos	205	235	321	332	118	-214	-64.46%
32 Sweepings Converted to RDF	0	95	237	251	237	-14	-5.58%
33 Incineration (With Energy Recovery)	3,839	5,312	4,407	4,520	4,544	24	0.53%
34 Incineration (Without Energy Recovery)	5	5	6	5	11	6	120.00%
35 Plasterboard	0	714	792	929	231	-698	-75.13%
36 Total Household Arisings	241,700	245,330	253,302	257,421	259,159	1,738	0.68%
37 Total Household Landfilled	116,270	116,941	115,963	116,483	117,795	1,312	1.13%
38 Non-Household Landfilled	3,222	4,952	5,417	5,441	4,409	-1,032	-18.97%
39 Bottom Ash (From Incineration) Landfilled	0	0	59	60	61	1	1.67%
40 Total LACW Landfilled	119,491	118,809	120,612	121,332	121,383	51	0.04%
41 Total LACW	245,677	248,577	260,124	264,526	264,554	28	0.01%
42 NI 191: Residual Household Waste per Household (kg)	485.86	492.99	487.94	483.84	488.61	4.77	0.99%
43 NI 192: Household Waste Reused, Recycled & Composted	50.30%	50.13%	52.23%	52.85%	52.71%		-0.15%
44 NI 193: LACW Landfilled	48.64%	47.80%	46.37%	45.87%	45.88%		0.01%
Performance Increase >							
< Performance Decrease							

Headline Variances kg/hh - April - 2016-17 compared to the same period in 2015-16

Material and Source	Headline - kg/hh Variances													
	Mendip District Council		Sedgemoor District Council		South Somerset District Council		Taunton Deane Borough Council		West Somerset District Council		Somerset County Council		Somerset Waste Partnership	
	2016-17 kg/hh	Variance kg/hh	2016-17 kg/hh	Variance kg/hh	2016-17 kg/hh	Variance kg/hh	2016-17 kg/hh	Variance kg/hh	2016-17 kg/hh	Variance kg/hh	2016-17 kg/hh	Variance kg/hh	2016-17 kg/hh	Variance kg/hh
Recycling	178.32	1.83	158.76	-7.34	178.43	-0.51	165.23	-1.30	177.33	-3.59	87.63	-1.10	258.99	-2.99
Green Garden	72.51	2.32	79.53	1.78	70.54	5.47	82.52	3.06	52.93	3.60	101.98	1.63	176.10	5.03
Food	69.94	10.10	80.22	-0.75	70.54	6.49	77.53	-10.32	65.10	6.58			73.58	2.16
Reuse	2.96	-0.31	3.33	-0.37	4.42	0.44	3.46	0.47	3.43	0.43	1.68	-0.39	5.31	-0.27
Sweepings - Recycled	31.30	0.55	31.29	-1.36	22.16	-3.63	24.39	-5.58	72.13	13.89			30.58	3.88
Total Reused, Recycled & Composted	355.04	14.49	353.13	-8.03	346.10	8.26	353.14	-13.67	370.94	20.92	191.30	0.14	544.56	7.81
Household Disposed	464.07	7.34	402.39	8.56	403.62	-0.10	378.33	19.33	366.16	11.06	64.29	-3.85	470.07	4.38
Sweepings (Converted to RDF)	0.98	0.02	0.98	-0.05	0.69	-0.11	0.76	-0.18	2.37	0.33			0.95	-0.05
Energy Recovery											18.11	0.10		
Incineration (Without Energy Recovery)	0.03	0.01	0.05	0.03	0.02	0.00	0.07	0.05	0.09	0.07			0.04	0.02
Total Household Arisings	819.15	21.84	755.56	0.55	749.74	8.17	731.53	5.71	737.18	32.04	273.70	-3.62	1,032.79	12.31
NI 191: Residual Household Waste per Household (kg/hh)	463.13	7.33	401.46	8.63	402.95	0.02	377.63	19.56	363.88	10.80			488.61	4.77
NI 192: Percentage of Household Waste Sent for Reuse, Recycling & Composting (%)	43.39%	0.63%	46.80%	-1.10%	46.21%	0.60%	48.32%	-2.28%	50.48%	0.70%			52.71%	-0.15%
NI 193: Percentage of LACW Landfilled (%)													45.88%	0.01%
Performance Increase >														
< Performance Decrease														
Performance Headline														
District performance for food waste is reliant on consistent operational practices by the contractor. As a result, the District weights may not be apportioned correctly and only the SWP total can be relied upon for reporting purposes.														
Number of Households	Mendip District Council	Sedgemoor District Council	South Somerset District Council	Taunton Deane Borough Council	West Somerset District Council	Somerset County Council								
2011-12	49,030	51,600	73,610	49,650	17,530	241,420								
2012-13	49,390	52,290	74,180	50,170	17,600	243,640								
2013-14	49,750	52,750	74,710	50,870	17,700	245,780								
2014-15	50,230	53,240	75,260	51,410	17,830	247,970								
2015-16	50,820	53,880	75,860	52,380	17,920	250,840								
It should also be noted that we are currently using household numbers 2015-16 as the household data from the Valuation Office Agency for 2016-17 is not yet available. When the correct data is applied to the 2016-17 tonnages, this will improve the results for all kg/hh calculations.														

National Indicators 191, 192 & 193 and Averages for the period April - December 2016-17 (Qtrs 1 - 3)

WCA's & Averages	April - December 2016-17		
	Authority Type	NI 191	NI 192
Mendip District Council	Collection	346.49	43.47%
Sedgemoor District Council		301.23	47.09%
South Somerset District Council		303.79	46.47%
Taunton Deane Borough Council		279.56	48.99%
West Somerset District Council		278.03	49.63%
South West Average	Collection	307.32	48.33%
England Average		362.82	44.05%

WDA's & Averages	April - December 2016-17			
	Authority Type	NI 191	NI 192	NI 193
Somerset Waste Partnership	Disposal	368.50	53.49%	45.19%
South West Average	Disposal / Unitary	386.73	49.33%	28.08%
England Average		418.80	44.66%	16.14%

South West National Indicators 191, 192 & 193 and Averages for the period April - December 2016-17 (Qtrs 1 - 3) - Including Rankings

Authority	Authority Type	NI 191 Total Residual Household Waste per Household (kg/household)	Ranking out of 19	NI 192 Percentage of Household Waste sent for Reuse, Recycling or Composting	Ranking out of 19	Includes Free Green Garden Waste Collections	Additional Information
Cheltenham Borough Council	Collection	353.41	16	48.33%	10		
Cotswold District Council		284.78	8	61.30%	1	✓	Collected with food
East Devon District Council		241.88	1	44.32%	14		
Exeter City Council		337.23	14	32.35%	19		
Forest of Dean District Council		305.11	12	54.28%	6	✓	Charged from April 2012
Gloucester City Council		367.69	17	40.06%	18		
Mendip District Council		346.49	15	43.47%	16		
Mid Devon District Council		272.67	5	54.74%	5		
North Devon District Council		367.79	18	46.90%	12	✓	Collected with food
Sedgemoor District Council		301.23	9	47.09%	11		
South Hams District Council		269.89	4	55.75%	3	✓	Collected with food
South Somerset District Council		303.79	10	46.47%	13		
Stroud District Council		313.52	13	41.14%	17		
Taunton Deane Borough Council		279.56	7	48.99%	9		
Teignbridge District Council		269.35	3	55.89%	2		
Tewkesbury Borough Council		303.98	11	54.22%	7		
Torridge District Council		371.35	19	44.18%	15	✓	Collected with food
West Devon Borough Council		255.08	2	55.05%	4	✓	Collected with card
West Somerset District Council		278.03	6	49.63%	8		
Authority	Authority Type	NI 191 Total Residual Household Waste per Household (kg/household)	Ranking out of 16	NI 192 Percentage of Household Waste sent for Reuse, Recycling or Composting	Ranking out of 16	NI 193 Percentage of LACW Sent To Landfill	Ranking out of 15
Devon County Council	Disposal	328.24	2	56.71%	3	17.60%	8
Gloucestershire County Council		379.13	8	52.50%	6	49.63%	14
Somerset Waste Partnership		368.50	6	53.49%	5	45.19%	13
Bath and North East Somerset Council	Unitary	329.80	3	55.67%	4	12.99%	6
Bournemouth Borough Council		360.35	4	49.95%	8	6.94%	3
Bristol City Council		377.16	7	43.41%	11	30.62%	12
Corwall		490.60	15	35.65%	14	63.68%	15
Council of the Isles of Scilly		908.17	16	20.28%	16		
Dorset Waste Partnership		318.43	1	59.99%	1	20.75%	10
North Somerset Council		365.07	5	57.64%	2	29.33%	11
Plymouth City Council		456.44	13	33.17%	15	0.08%	2
Poole Borough Council		389.67	9	50.15%	7	14.21%	7
South Gloucestershire Council		411.45	11	49.14%	9	12.75%	5
Swindon Borough Council		457.55	14	39.60%	13	7.17%	4
Torbay Council		395.30	10	42.10%	12	0.04%	1
Wiltshire		413.67	12	46.43%	10	20.70%	9
South West Average	Collection	307.32		48.33%			
South West Average	Disposal / Unitary	386.73		49.33%		28.08%	

Reported Fly-Tips - Quarter 1 - Quarter 4 2016-17 compared to the same period in previous years

	District	Fly-Tips (Full Year Data)					
		2011-12	2012-13	2013-14	2014-15	2015-16	2016-17
Number of Reported Fly-Tips	Mendip District Council	1,704	1,631	1,834	2,042	2,078	1,757
	Sedgemoor District Council	1,467	1,161	1,234	1,088	1,117	1,177
	South Somerset District Council	1,664	1,659	1,253	1,160	1,083	1,150
	Taunton Deane Borough Council	688	646	561	864	785	664
	West Somerset District Council	164	93	77	87	198	140
	Totals	5,687	5,190	4,959	5,241	5,261	4,888

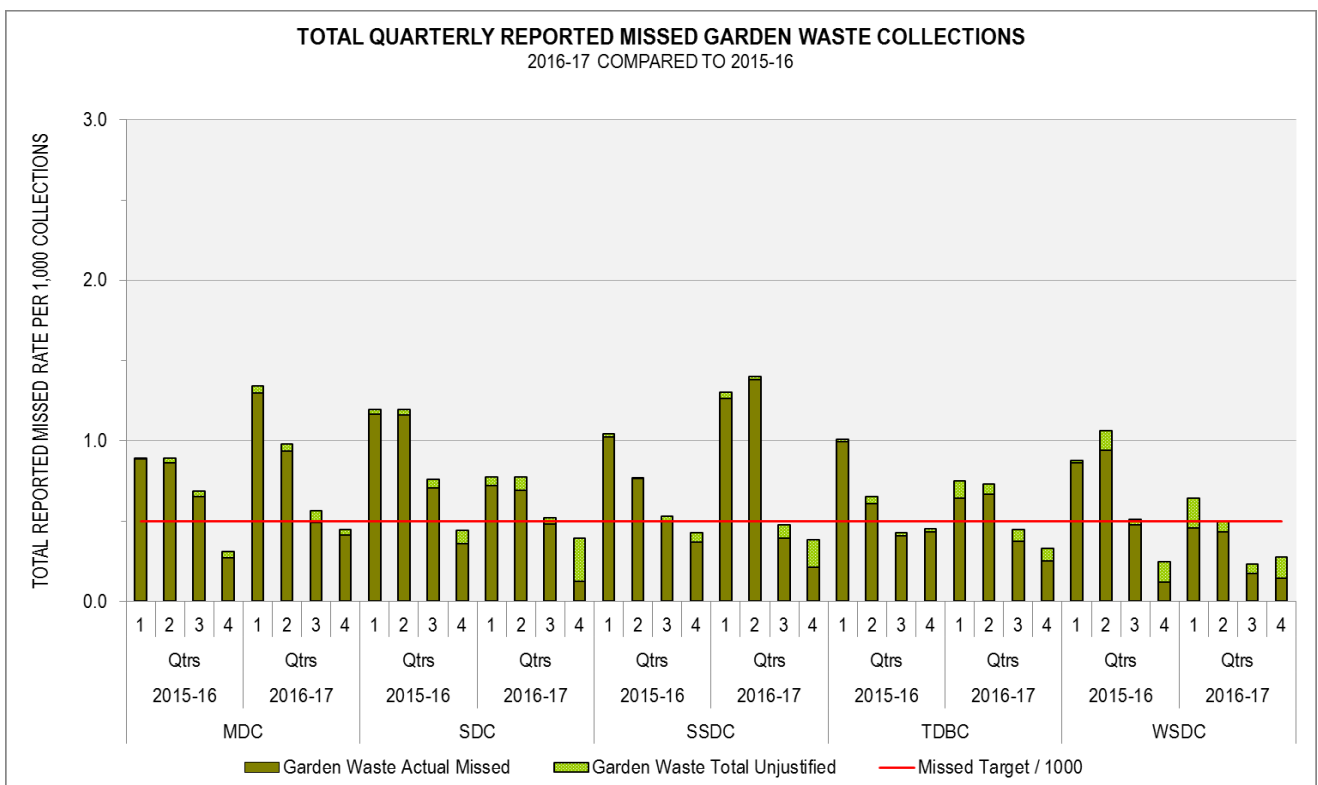
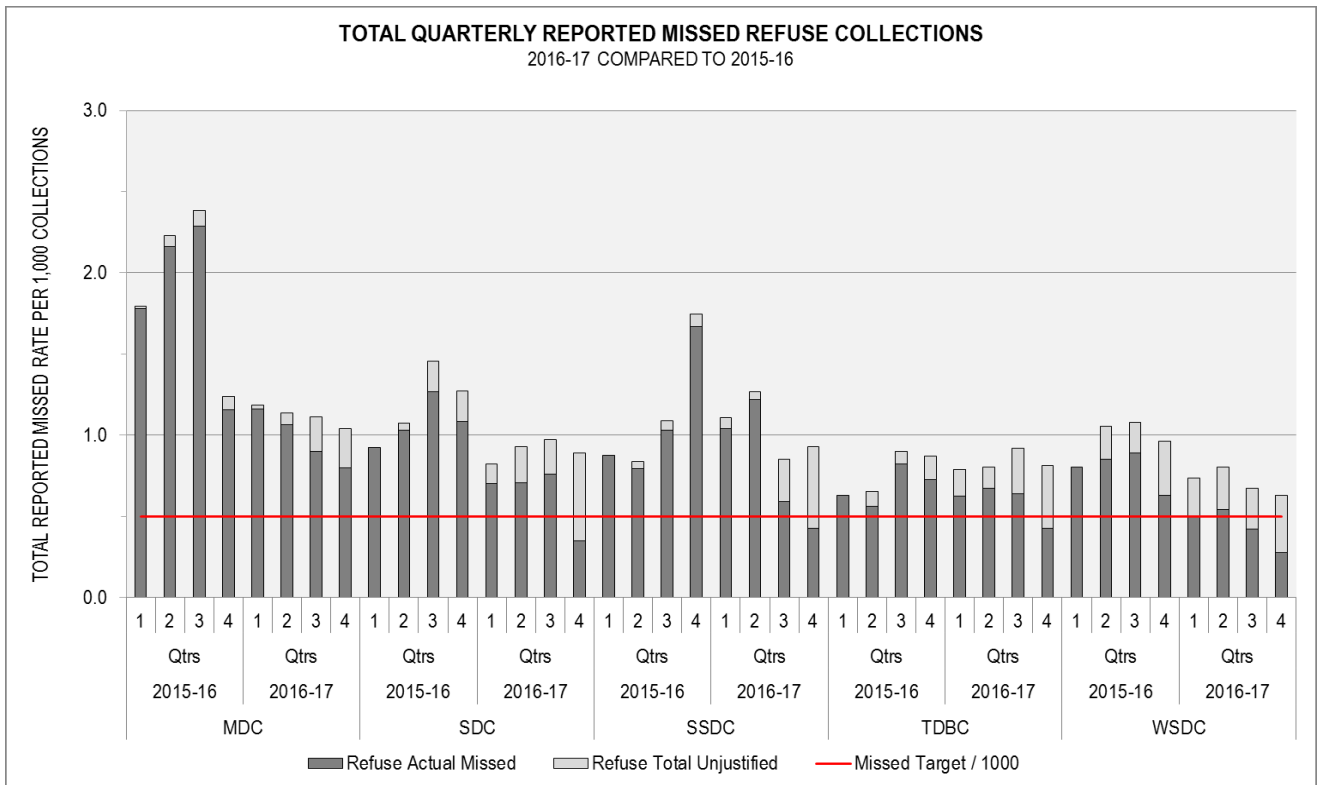
Material Type	Quarter 1 - Quarter 4 2015-16					
	Number of Incidents					
	MDC	SDC	SSDC	TDBC	WSDC	Totals
Animal carcass	2	1	5	54	2	64
Green	299	54	42	37	8	440
Vehicle parts	52	19	30	48	3	152
White goods	98	67	70	26	11	272
Other electrical	49	46	48	6	2	151
Tyres	140	74	60	14	18	306
Asbestos	0	0	8	4	2	14
Clinical	1	0	1	40	2	44
Construction / demolition / excavation	198	64	143	16	56	477
Black bags - commercial	12	0	39	45	8	104
Black bags - household	363	110	154	156	30	813
Chemical-drums-oil-or-fuel	16	13	15	3	0	47
Other household waste	786	669	424	242	56	2,177
Other commercial waste	62	0	19	65	0	146
Other (unidentified)	0	0	25	29	0	54
Totals	2,078	1,117	1,083	785	198	5,261

Material Type	Quarter 1 - Quarter 4 2016-17					
	Number of Incidents					
	MDC	SDC	SSDC	TDBC	WSDC	Totals
Animal carcass	2	4	7	2	1	16
Green	129	48	66	31	6	280
Vehicle parts	51	20	38	20	3	132
White goods	92	69	62	41	15	279
Other electrical	44	37	40	11	2	134
Tyres	130	69	87	18	14	318
Asbestos	0	0	5	1	0	6
Clinical	0	0	2	3	0	5
Construction / demolition / excavation	143	75	129	71	19	437
Black bags - commercial	56	0	37	12	4	109
Black bags - household	181	103	136	113	27	560
Chemical-drums-oil-or-fuel	21	24	20	5	4	74
Other household waste	831	728	420	281	44	2,304
Other commercial waste	77	0	52	29	1	159
Other (unidentified)	0	0	49	26	0	75
Totals	1,757	1,177	1,150	664	140	4,888

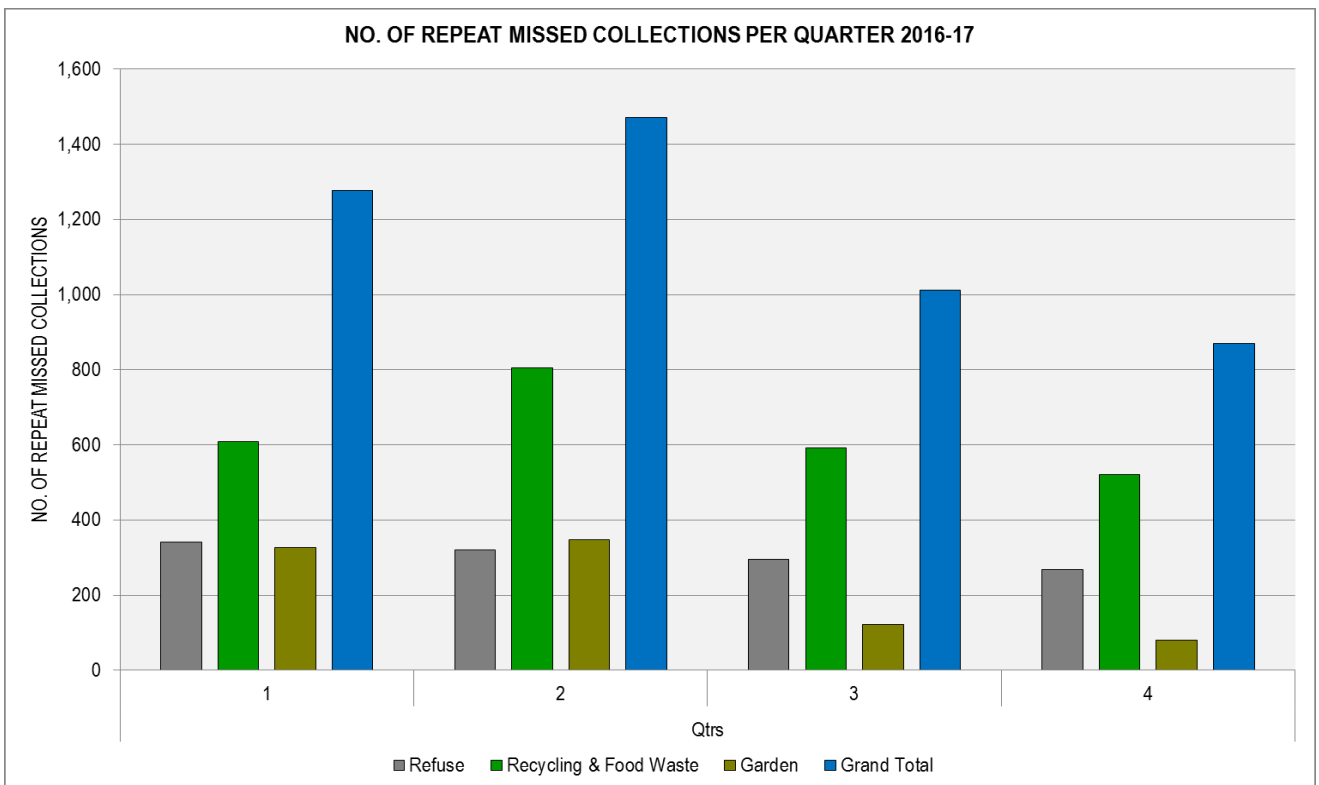
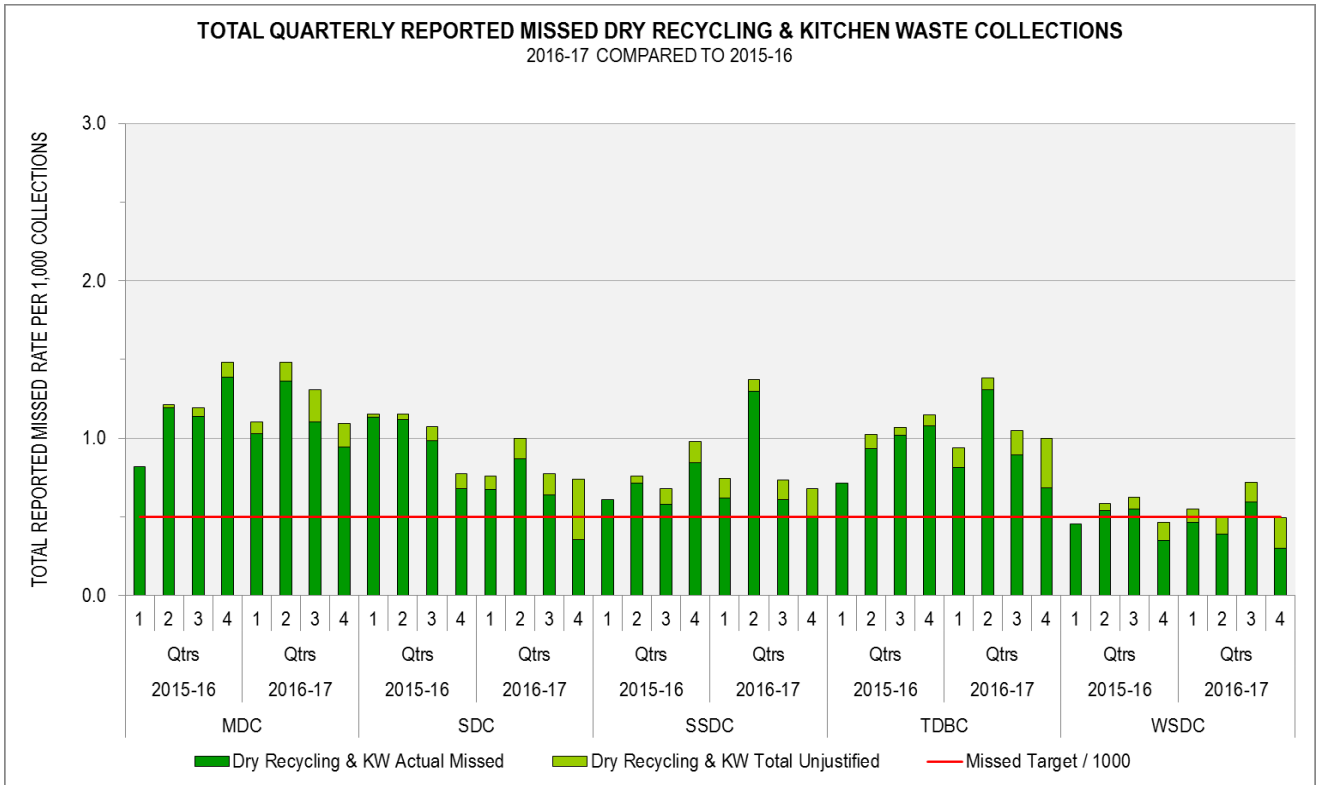
All data is now obtained from District Council WasteDataFlow entries.

Due to reporting changes, data is now only available for quarterly periods.

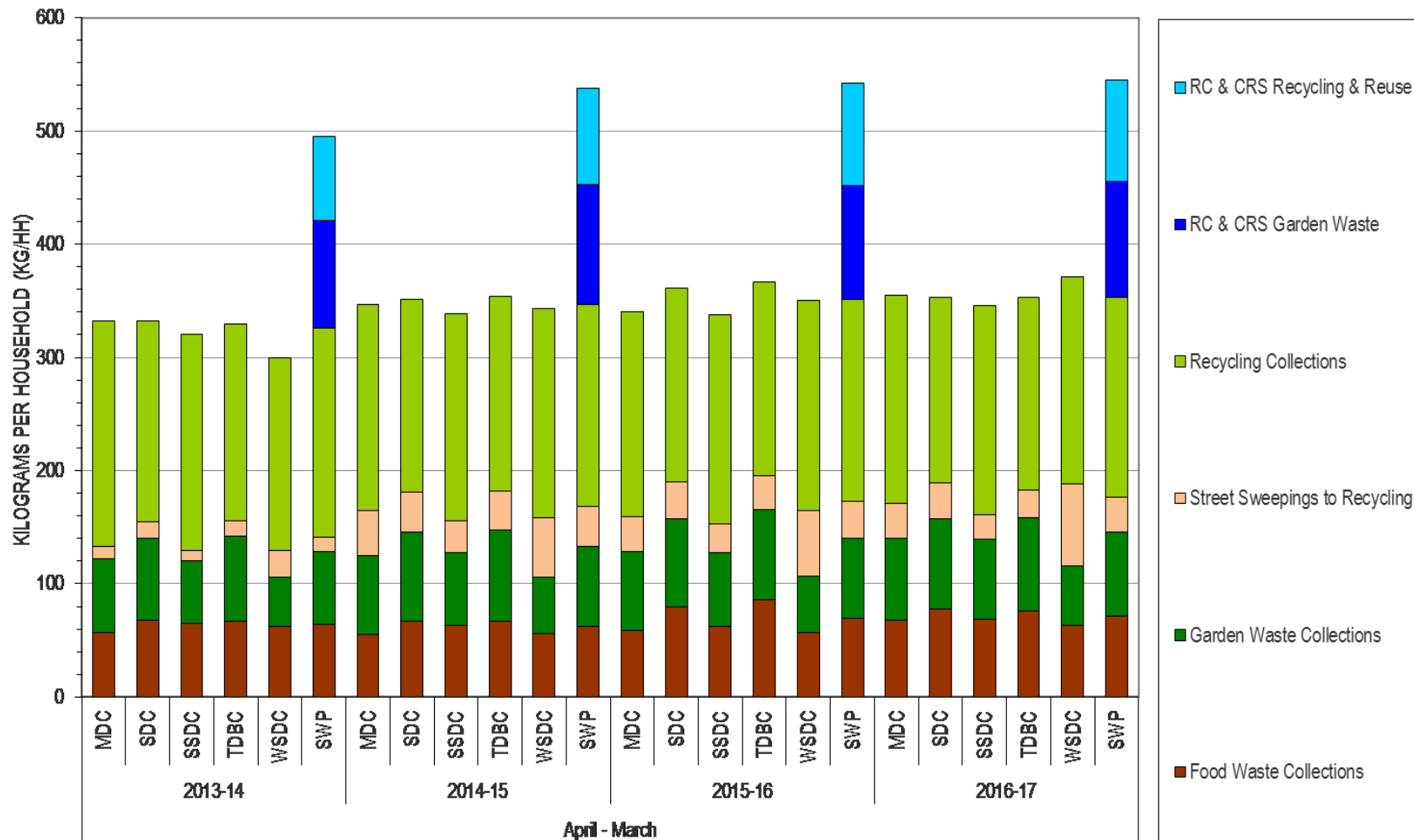
Missed Refuse, Garden Waste and Dry Recycling & Food Waste Collection Graphs - Qtrs 1 - 4 2016-17 compared to 2015-16 & Repeat Missed Collections for Qtrs 1 - 4 2016-17



Missed Refuse, Garden Waste and Dry Recycling & Food Waste Collection Graphs - Qtrs 1 - 4 2016-17 compared to 2015-16 & Repeat Missed Collections for Qtrs 1 - 4 2016-17

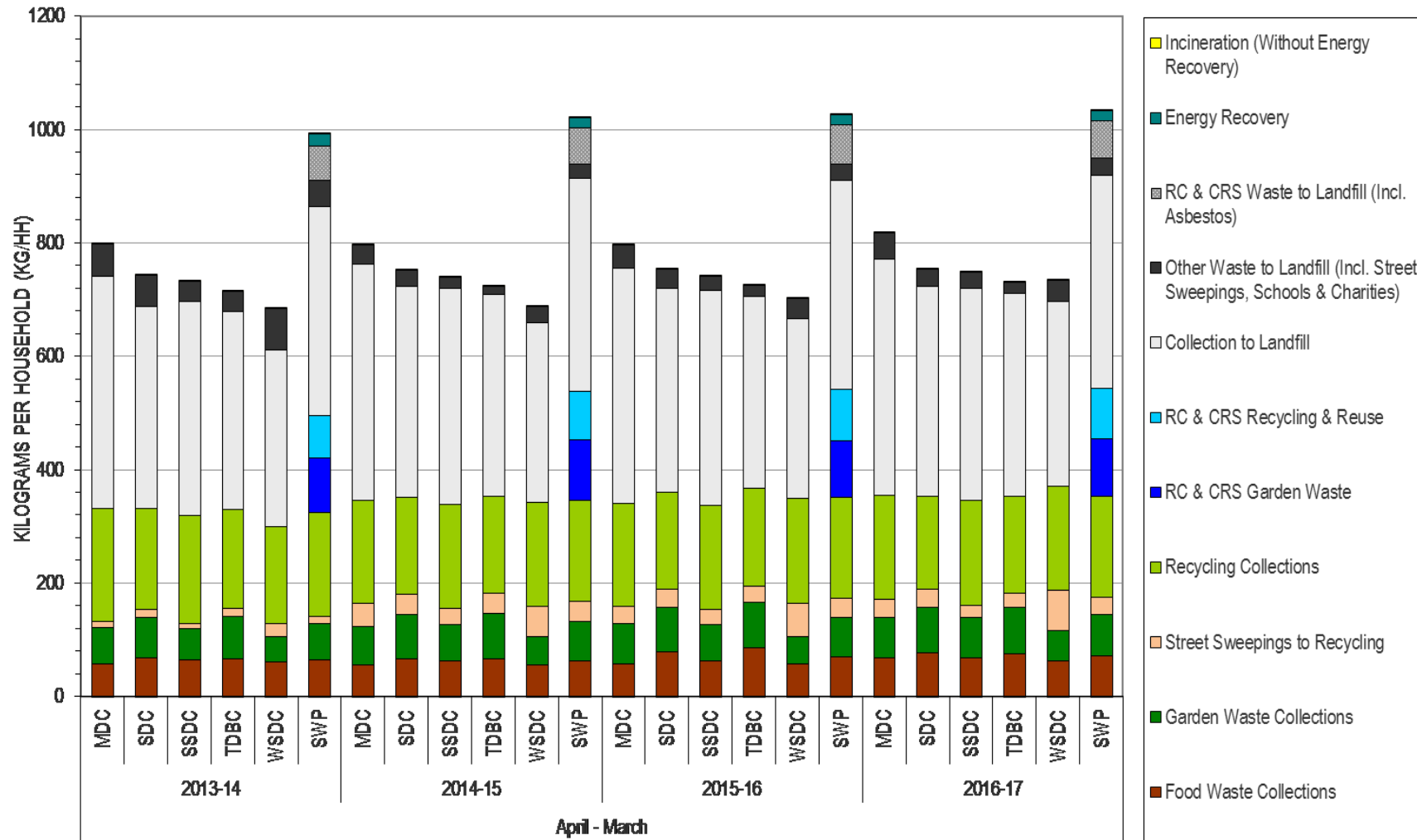


**TOTAL HOUSEHOLD RECYCLING IN SOMERSET
KG/HH COMPARISON 2013-14 - 2016-17**



All data is comparative for the 12 month period April - March.

**TOTAL HOUSEHOLD WASTE ARISING IN SOMERSET
KG/HH COMPARISON 2013-14 - 2016-17**



All data is comparative for the 12 month period April - March.

Recycling Centre Tonnages and Variations - April - 2016-17 compared to the same period in 2015-16

District	Recycling Centre	April - 2016-17					Total Arisings	Variation					Total Arisings
		Dry Recycling & Reuse	Composted	Recovered	Residual	Hardcore & Soil		Dry Recycling & Reuse	Green Composted	Recovered	Residual	Hardcore & Soil	
Mendip	Wells RC	1,337.24	1,467.89	223.25	1,269.24	195.50	4,493.12	-54.87	72.67	27.06	-110.89	17.36	-48.67
	Frome RC	1,705.16	2,042.56	288.41	1,801.51	222.97	6,060.61	-92.16	111.96	-14.13	-53.00	-60.75	-108.08
	Street RC	1,018.08	1,463.78	181.06	856.38	94.14	3,613.44	-69.65	35.83	9.53	-42.81	3.08	-64.01
	Totals	4,060.48	4,974.23	692.73	3,927.12	512.61	14,167.17	-216.68	220.46	22.45	-206.69	-40.31	-220.76
Sedgemoor	Cheddar RC	746.03	873.72	153.47	526.96	78.08	2,378.26	-35.78	73.33	-8.77	-9.74	-21.46	-2.42
	Highbridge RC	1,762.78	2,130.16	467.45	1,231.26	145.94	5,737.60	-113.93	-36.93	-17.40	57.35	-81.32	-192.23
	Bridgwater RC	2,842.01	2,689.89	749.32	1,881.71	332.31	8,495.25	-145.07	37.08	16.11	-46.13	-40.02	-178.03
	Totals	5,350.83	5,693.77	1,370.24	3,639.93	556.33	16,611.10	-294.77	73.48	-10.07	1.49	-142.80	-372.67
South Somerset	Chard RC	1,556.68	2,090.88	314.63	755.83	262.30	4,980.33	-48.02	50.65	23.22	-128.08	-27.92	-130.16
	Crewkerne CRS	613.14	774.56	83.62	490.71	122.39	2,084.43	-88.85	-142.59	-18.11	-68.83	0.23	-318.14
	Castle Cary RC	748.29	918.44	66.22	552.04	80.00	2,364.99	-13.27	25.58	-0.40	-45.54	-16.06	-49.69
	Somerton RC	823.00	1,280.71	127.52	706.36	119.24	3,056.83	72.50	71.90	28.73	7.03	-0.48	179.68
	Yeovil RC	2,339.07	2,615.95	404.45	1,984.73	267.95	7,612.14	-221.83	60.81	-49.54	-99.67	-46.16	-356.39
Totals	6,080.19	7,680.54	996.44	4,489.67	851.88	20,098.71	-299.47	66.35	-16.10	-335.09	-90.39	-674.70	
Taunton Deane	Wellington RC	1,581.77	1,573.09	299.06	875.69	189.14	4,518.75	-126.97	-3.33	-27.50	11.66	-2.60	-148.74
	Taunton RC	3,656.36	3,247.52	792.94	2,286.23	514.28	10,497.34	-139.27	99.00	52.57	-214.69	-22.21	-224.59
	Totals	5,238.13	4,820.61	1,092.01	3,161.92	703.42	15,016.09	-266.24	95.67	25.07	-203.02	-24.81	-373.33
West Somerset	Dulverton CRS	208.80	179.23	36.13	142.10	33.18	599.44	-35.57	-12.25	-3.67	-30.06	-4.88	-86.43
	Minehead RC	1,045.78	1,402.40	220.89	474.53	84.38	3,227.99	33.17	-60.63	5.35	-63.27	-12.14	-97.52
	Williton RC	666.09	830.82	118.98	290.65	82.60	1,989.15	-90.76	24.93	-15.19	-14.47	-14.38	-109.87
	Totals	1,920.68	2,412.45	376.00	907.28	200.16	5,816.57	-93.16	-47.95	-13.51	-107.80	-31.40	-293.82
Totals - All Sites		22,650.30	25,581.60	4,527.41	16,125.93	2,824.40	71,709.64	-1,170.32	408.01	7.84	-851.12	-329.71	-1,935.29

Recycling Centre Recycling & Recovery Rates (%) - April - 2016-17 compared to the same period in 2013-14 to 2015-16

District	Recycling Centre	Recycling & Recovery Rate (%)				Change from 2015-16
		April -				
		2013-14	2014-15	2015-16	2016-17	
Mendip	Wells RC	67.66%	70.93%	68.37%	70.47%	2.10%
	Frome RC	69.68%	68.91%	68.49%	69.14%	0.65%
	Street RC	78.34%	78.53%	74.93%	75.67%	0.74%
Sedgemoor	Cheddar RC	74.07%	75.63%	76.47%	77.09%	0.62%
	Highbridge RC	79.90%	80.33%	79.41%	77.98%	-1.43%
	Bridgwater RC	78.71%	78.61%	76.78%	76.95%	0.17%
South Somerset	Chard RC	80.47%	80.97%	81.66%	83.98%	2.32%
	Crewkerne CRS	75.14%	76.26%	75.46%	74.99%	-0.47%
	Castle Cary RC	74.76%	74.11%	74.23%	75.84%	1.61%
	Somerton RC	75.67%	73.11%	74.64%	75.95%	1.31%
	Yeovil RC	72.26%	69.63%	72.77%	72.98%	0.21%
Taunton Deane	Wellington RC	80.79%	81.71%	80.70%	79.77%	-0.93%
	Taunton RC	78.39%	77.76%	75.45%	77.10%	1.65%
West Somerset	Dulverton CRS	71.75%	72.07%	73.42%	74.91%	1.49%
	Minehead RC	82.96%	83.78%	83.34%	84.90%	1.56%
	Williton RC	87.47%	86.05%	84.76%	84.76%	0.00%
Totals - All Sites		76.83%	76.58%	75.92%	76.59%	0.67%

Recycling Centre Visits - April - 2016-17 compared to the same period in 2013-14 to 2015-16

District	Recycling Centre	Visitor Numbers				% Change
		April -				
		2013-14	2014-15	2015-16	2016-17	
Mendip	Wells RC	79,535	79,132	85,810	88,399	3.02%
	Frome RC	78,706	152,283	116,716	110,263	-5.53%
	Street RC	77,366	78,288	70,622	84,664	19.88%
Sedgemoor	Cheddar RC	51,691	40,476	39,602	41,724	5.36%
	Highbridge RC	112,737	121,053	132,852	144,449	8.73%
	Bridgwater RC	125,022	146,603	173,576	185,915	7.11%
South Somerset	Chard RC	101,963	127,469	133,479	146,014	9.39%
	Crewkerne CRS	33,869	33,930	30,961	29,160	-5.82%
	Castle Cary RC	31,448	34,348	38,027	40,511	6.53%
	Somerton RC	52,087	57,515	57,890	60,537	4.57%
	Yeovil RC	115,251	156,416	170,454	173,409	1.73%
Taunton Deane	Wellington RC	92,945	89,179	91,266	97,433	6.76%
	Taunton RC	173,913	224,357	254,162	261,976	3.07%
West Somerset	Dulverton CRS	8,464	8,839	8,350	8,466	1.39%
	Minehead RC	67,587	86,562	96,914	104,406	7.73%
	Williton RC	51,286	52,018	59,107	63,142	6.83%
Total Across All Sites		1,253,870	1,488,468	1,559,788	1,640,468	5.17%
Total Across All Sites (Excl. CRS's)		1,211,537	1,445,699	1,520,477	1,602,842	5.42%
Total (CRS's Only)		42,333	42,769	39,311	37,626	-4.29%

Number of Visits by Weekday - April - 2016-17

District	Site	Number of Visits by Weekday						
		Monday	Tuesday	Wednesday	Thursday	Friday	Saturday	Sunday
Mendip	Wells RC	21,744	Site Closed	Site Closed	19,817	18,187	16,943	11,708
	Frome RC	15,587	15,100	14,953	15,440	16,260	17,379	15,544
	Street RC	20,291	16,127	17,418	Site Closed	Site Closed	19,370	11,459
Sedgemoor	Cheddar RC	9,725	7,688	8,023	Site Closed	Site Closed	10,517	5,771
	Highbridge RC	36,244	Site Closed	Site Closed	32,126	27,907	28,049	20,123
	Bridgwater RC	25,878	25,257	24,476	24,707	25,083	30,272	30,242
South Somerset	Chard RC	38,415	Site Closed	Site Closed	33,266	27,587	26,472	20,274
	Crewkerne CRS	6,797	5,354	5,726	Site Closed	Site Closed	7,118	4,165
	Castle Cary RC	9,470	7,338	7,636	Site Closed	Site Closed	9,889	6,178
	Somerton RC	15,129	Site Closed	Site Closed	13,669	12,415	11,916	7,408
	Yeovil RC	25,307	23,920	23,851	23,519	25,318	26,366	25,128
Taunton Deane	Wellington RC	22,687	17,928	18,250	Site Closed	Site Closed	23,877	14,691
	Taunton RC	37,671	34,871	33,272	35,437	38,460	41,723	40,542
West Somerset	Dulverton CRS	1,892	1,396	1,566	Site Closed	Site Closed	2,328	1,284
	Minehead RC	15,149	14,600	14,677	15,695	16,198	14,968	13,119
	Williton RC	14,571	11,301	12,709	Site Closed	Site Closed	15,717	8,847
All Sites		316,557	180,880	182,557	213,676	207,415	302,904	236,483